

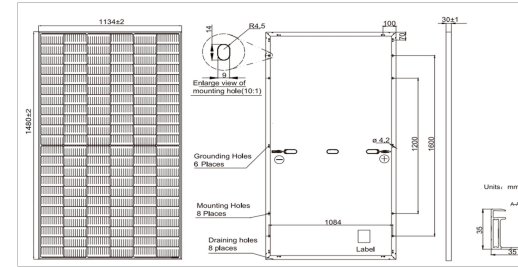
400W-132

High efficiency monocrystalline silicon solar modules

Comprehensive Certificates

- IEC61215, IEC61730
- ISO9001:2015 Quality management systems
- ISO45001: Environmental management systems
- ISO45001:2018 Occupational health and safety management systems

Mechanical Diagrams



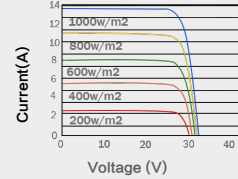
Mechanical Parameters

| | |
|------------------------|--|
| Solar Cell (Type/Size) | MONO(182mm) |
| Solar Cells Number | 132Pcs(6x22) |
| Dimension | 1480mm*1134mm*30mm |
| Weight | 16.5kg/Pcs |
| Coated Frame | Anodized aluminum alloy |
| Junction Box | 002-4 square +MC4 tube 70CM |
| Cable | 4.0mm ² , (+)700mm(-) 700mm |
| Connector | Original MC4/Compatible MC4 |
| Packing Volume | 3.372Cbm/Pallet |
| 40' container | 820Pcs |

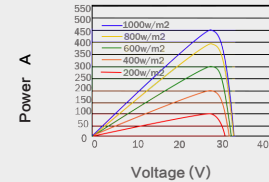
Electrical Parameters at STC

| | |
|-------------------------------|-------|
| Module Type | 400P |
| Rate Maximum Power (Pmax/W) | 400 |
| Module Efficiency (%) | 19.6 |
| Open Circuit Voltage (Voc/V) | 42.90 |
| Short Circuit Current (Isc/A) | 11.13 |
| Voltage at Pmax (Vmp/V) | 38.20 |
| Current at Pmax (Imp/A) | 10.47 |

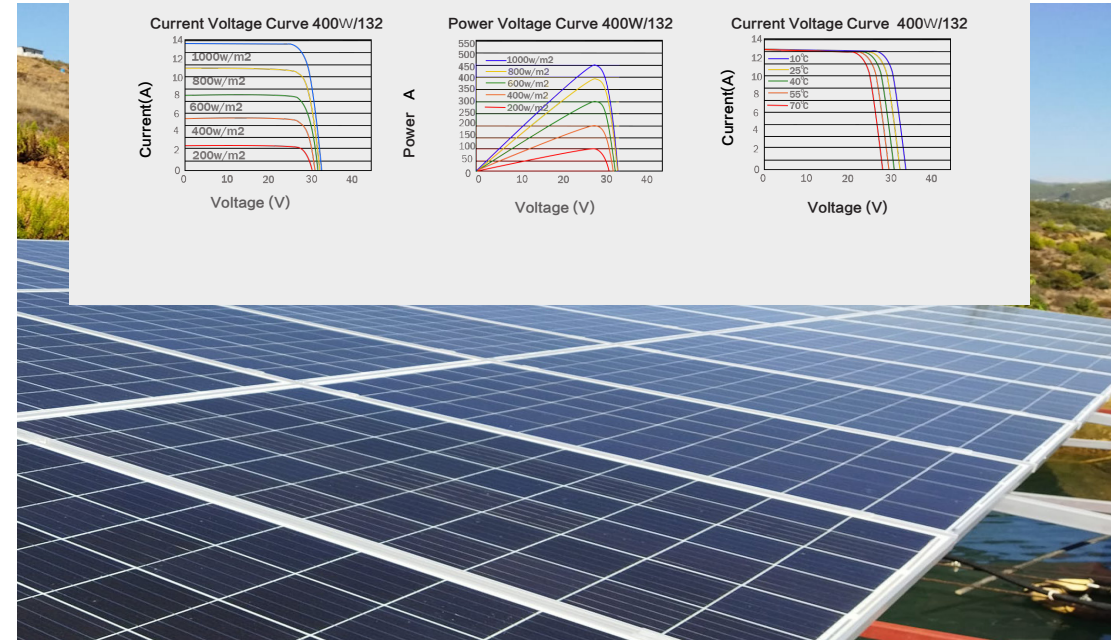
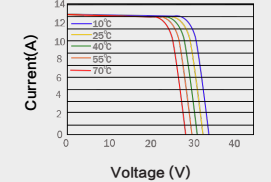
Current Voltage Curve 400W/132

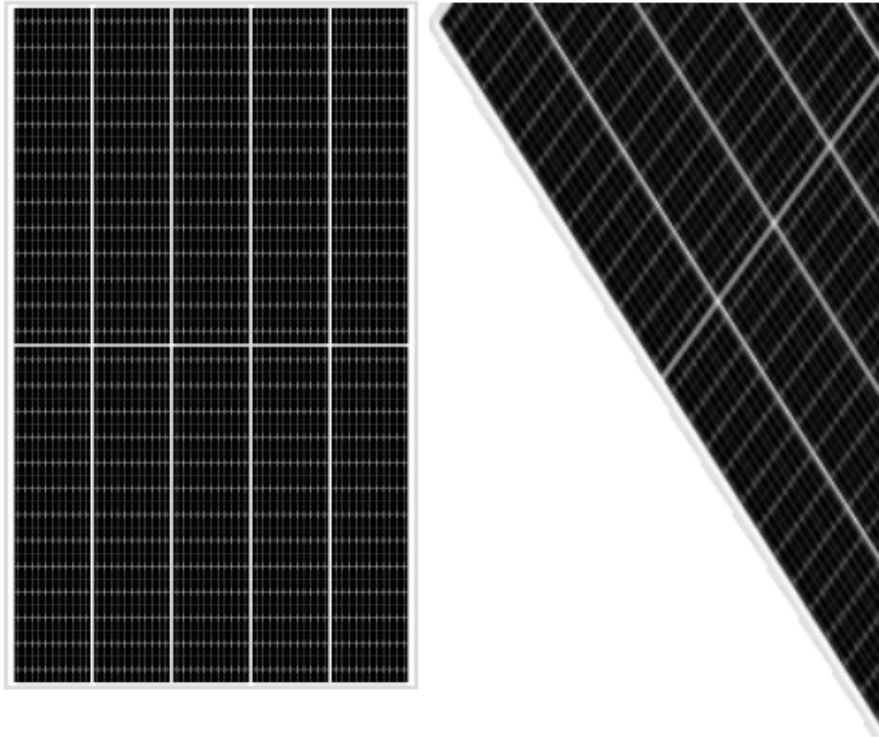


Power Voltage Curve 400W/132



Current Voltage Curve 400W/132





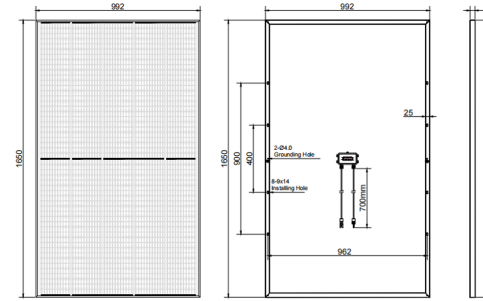
280W-130

High efficiency monocrystalline silicon solar modules

Comprehensive Certificates

- IEC61215, IEC61730
- ISO9001:2015 Quality management systems
- ISO45001: Environmental management systems
- ISO45001:2018 Occupational health and safety management systems

Mechanical Diagrams



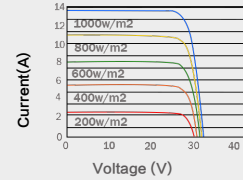
Mechanical Parameters

| | |
|------------------------|---|
| Solar Cell (Type/Size) | MONO(182mm) |
| Solar Cells Number | 130Pcs(5x26) |
| Dimension | 1650mm*992mm*35mm |
| Weight | 16.5Kg/Pcs |
| Coated Frame | Anodized aluminum alloy |
| Junction Box | 002-4 square +MC4 tube 70CM |
| Cable | 4.0mm ² , (+)700mm/(-) 700mm |
| Connector | Original MC4/Compatible MC4 |
| Packing Volume | 3.372Cbm/Pallet |
| 40' container | 980Pcs |

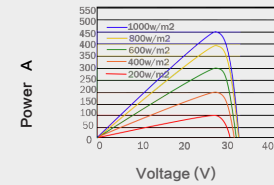
Electrical Parameters at STC

| | |
|------------------------------|-------|
| Module Type | 280P |
| Rate Maximum Power (Pmax/W) | 280 |
| Module Efficiency(%) | 18.4 |
| Open Circuit Voltage(Voc/V) | 35.86 |
| Short Circuit Current(Isc/A) | 9.87 |
| Voltage at Pmax(Vmp/V) | 30.07 |
| Current at Pmax(Imp/A) | 9.31 |

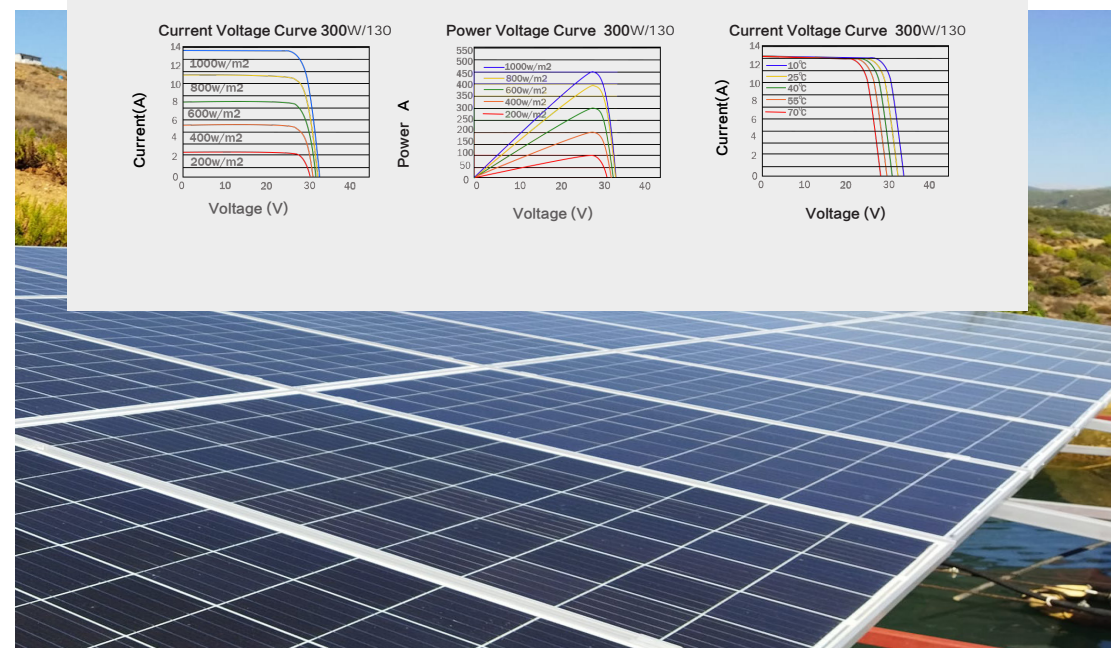
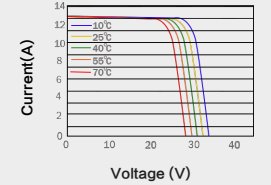
Current Voltage Curve 300W/130

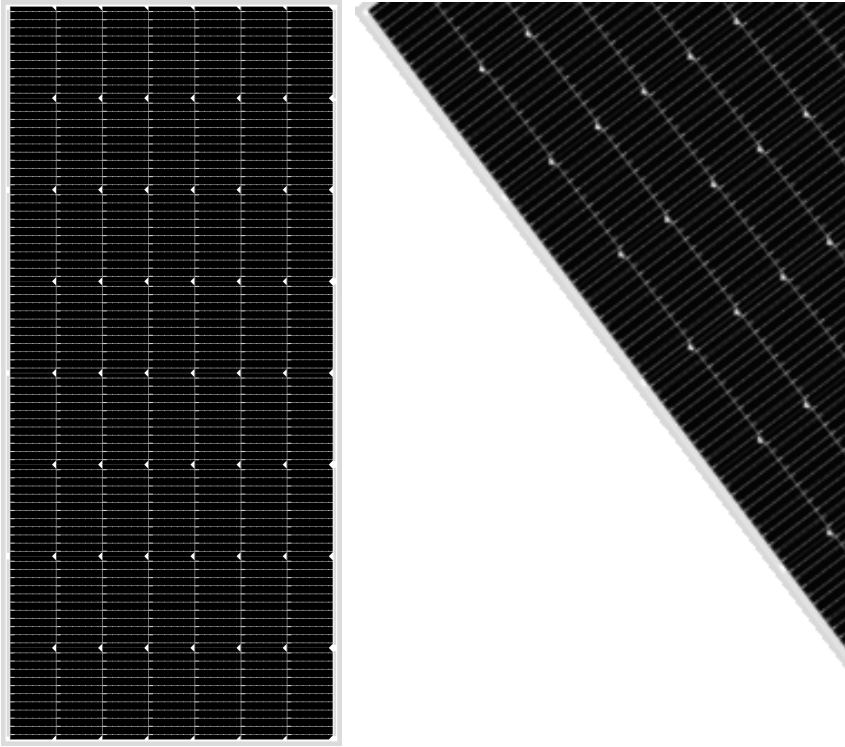


Power Voltage Curve 300W/130



Current Voltage Curve 300W/130





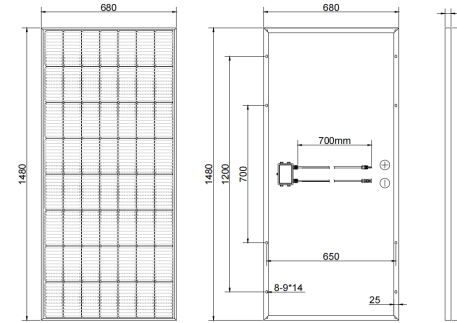
180W-56

High efficiency monocrystalline silicon solar modules

Comprehensive Certificates

- IEC61215, IEC61730
- ISO9001:2015 Quality management systems
- ISO45001: Environmental management systems
- ISO45001:2018 Occupational health and safety management systems

Mechanical Diagrams



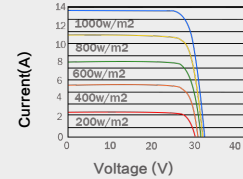
Mechanical Parameters

| | |
|------------------------|----------------------------------|
| Solar Cell (Type/Size) | MONO(182mm) |
| Solar Cells Number | 56Pcs(7x8) |
| Dimension | 1480mm*680mm*30mm |
| Weight | 10.3kgPcs |
| Coated Frame | Anodized aluminum alloy |
| Junction Box | 005-two flat copper wire +MC4 50 |
| Cable | 4.0mm2, (+)500mm/(-) 500mm |
| Connector | Original MC4/Compatible MC4 |
| Packing Volume | 3.372Cbm/Pallet |
| 40' container | 1872 Pcs |

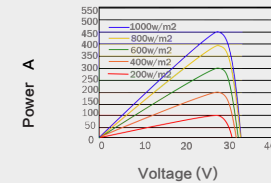
Electrical Parameters at STC

| | |
|------------------------------|-------|
| Module Type | 180P |
| Rate Maximum Power(Pmax/W) | 180 |
| Module Efficiency(%) | 19.90 |
| Open Circuit Voltage(Voc/V) | 28.64 |
| Short Circuit Current(Isc/A) | 8.29 |
| Voltage at Pmax(Vmp/V) | 23.02 |
| Current at Pmax(Imp/A) | 7.82 |

Current Voltage Curve 200W/56



Power Voltage Curve 200W/56



Current Voltage Curve 200W/56

