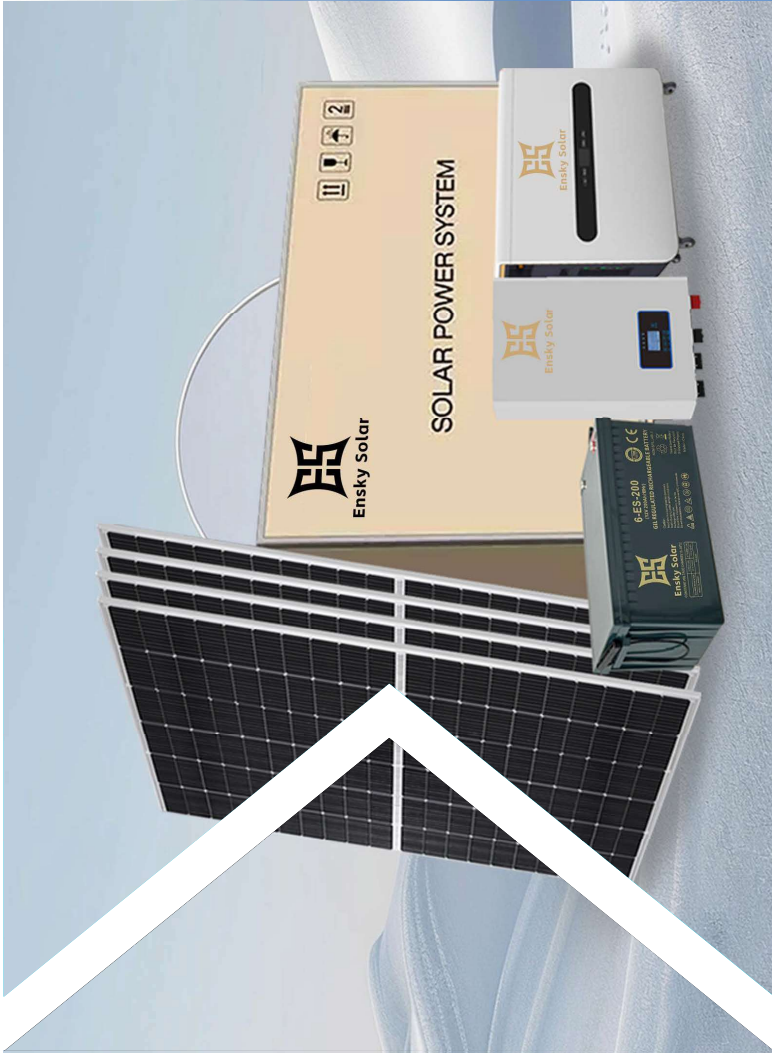




**Ensky Solar**



# SOLAR PANEL



MULTI-BUSBAR  
TECHNOLOGY



HIGH POWER OUTPUT



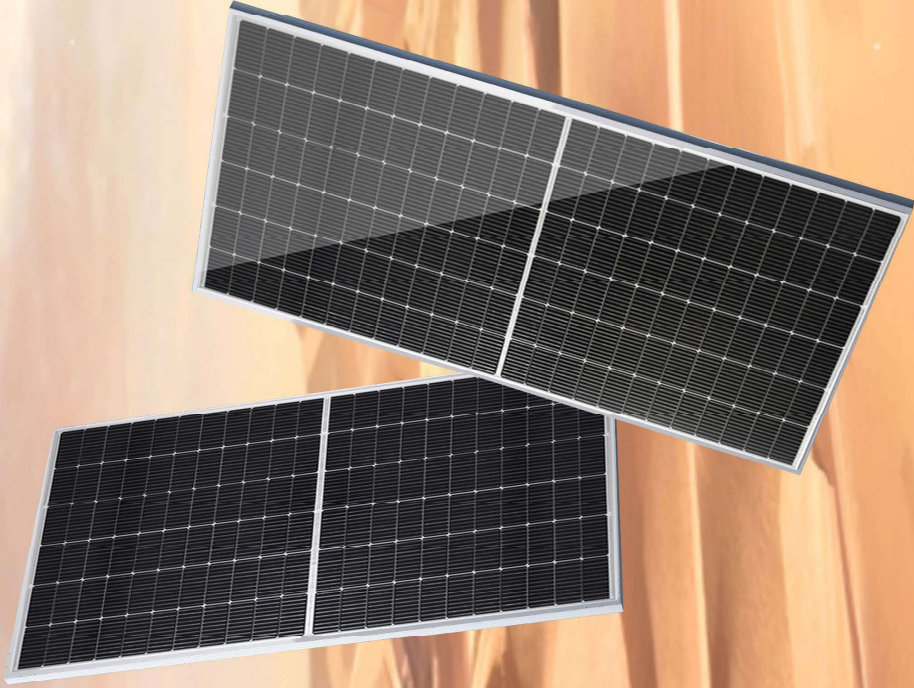
CUSTOMIZED DESIGN



BETTER RESISTANCE TO  
HOT SPOTS



BETTER LOW LIGHT  
PERFORMANCE



## Solar panel parameters

Module Power	550W-144	460W-120	400W-108	280W-130	180W-56
Module Efficiency(%)	20.90%	20.80%	21.00%	15.27%	17.90%
Open Circuit Voltage	49.94V	41.25V	37.23V	35.88V	24.84V
Short Circuit Current	14.05A	13.89A	13.25A	8.85A	9.13A
Voltage at Pmax	41.97V	34.67V	30.95V	30.07V	20.52V
Current at Pmax	13.11A	12.98A	14.00A	8.32A	8.78A
Solar Cell	182MM	182MM	182MM	182MM	182MM
Weight	28.5KG	23.9KG	21.5KG	16.5KG	10.3KG
Dimension	2279*1134*35	1909*1134*35	1722*1134*35	1650*992*35	1480*680*30
Number	31PCS/PLT	31PCS/PLT	31PCS/PLT	31PCS/PLT	2PCS/CTN
40HQ Container	620PCS	744PCS	936PCS	1160PCS	1872PCS